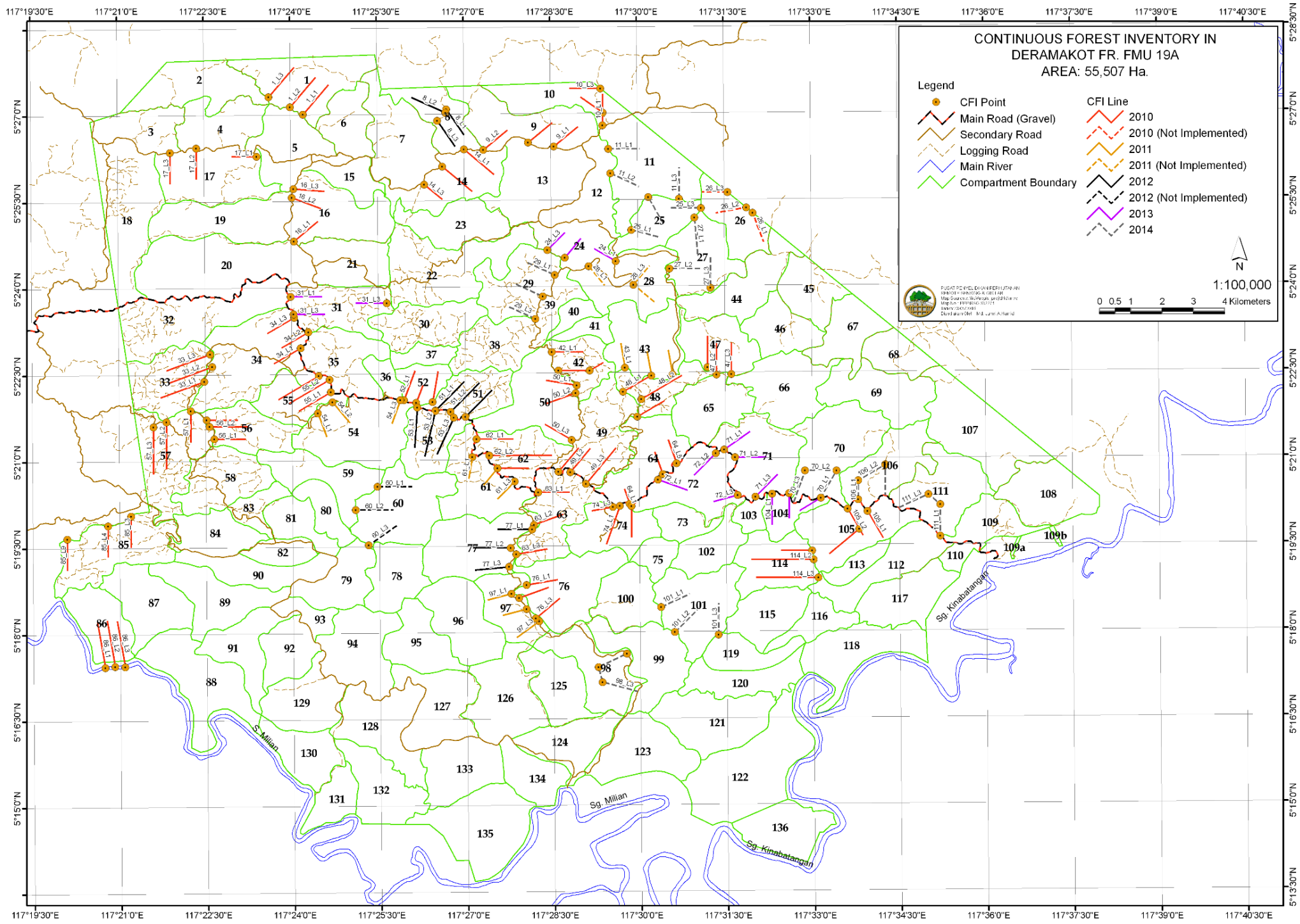


**Continuous Forest Inventory  
(CFI)  
Summary Report  
Deramakot Forest Reserve**



**CONTINUOUS FOREST INVENTORY IN  
DERAMAKOT FR. FMU 19A**  
AREA: 55,507 Ha.

**Legend**

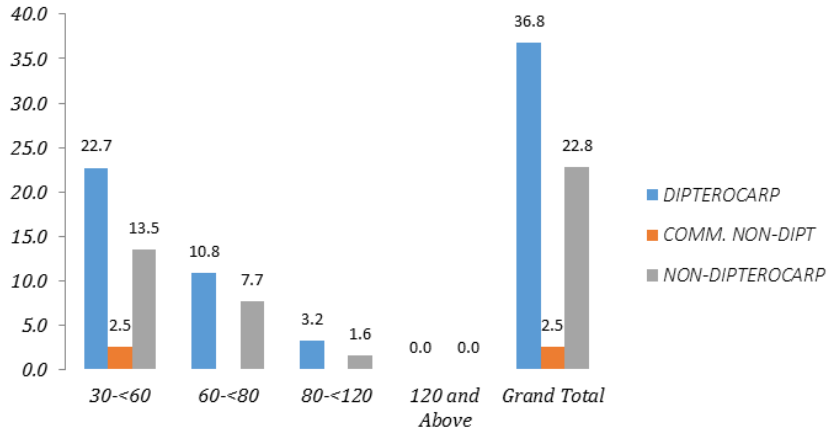
CFI Point	CFI Line
Main Road (Gravel)	2010
Secondary Road	2010 (Not Implemented)
Logging Road	2011
Main River	2011 (Not Implemented)
Compartment Boundary	2012
	2012 (Not Implemented)
	2013
	2014

PUSAT DATA DAN REKODAN  
 HIMPUNAN Hutan Keluan (HKL)  
 110, Jalan Kuching, 95300 Kuching  
 Sarawak, Malaysia  
 Tel: 082-5241111  
 Fax: 082-5241112  
 E-mail: hkl@hkl.gov.my

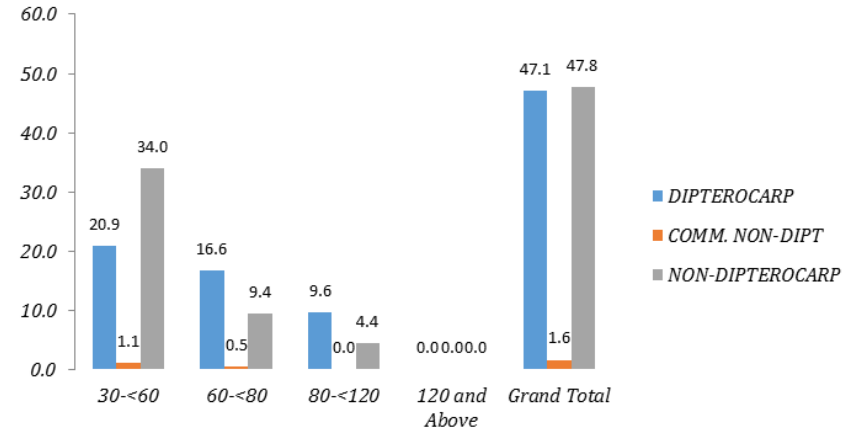
N  
 1:100,000  
 0 0.5 1 2 3 4 Kilometers

# Summary of Tree Density Distribution per Hectare for CFI: 2005 – 2014

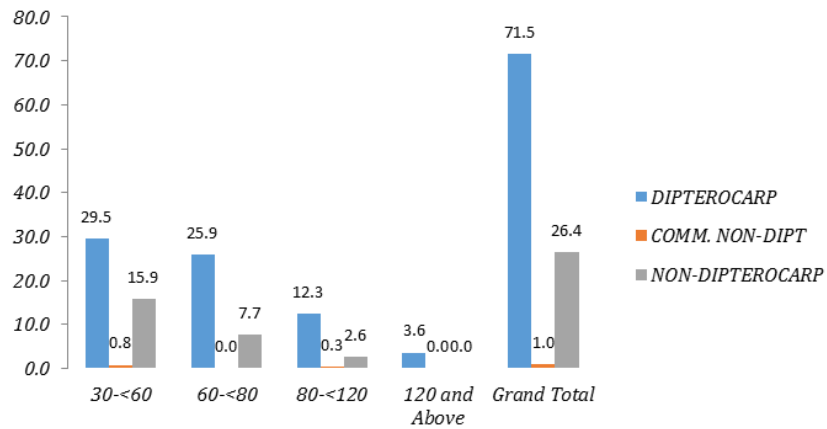
## 2005 Data (Left) and Re-Enumeration in 2010 (Right)



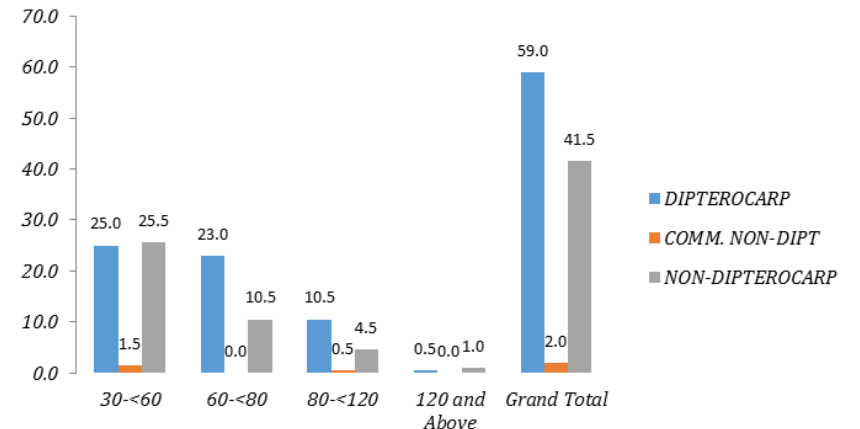
Compartment 10: Number of Tree ha-1 by DBH Class (cm)



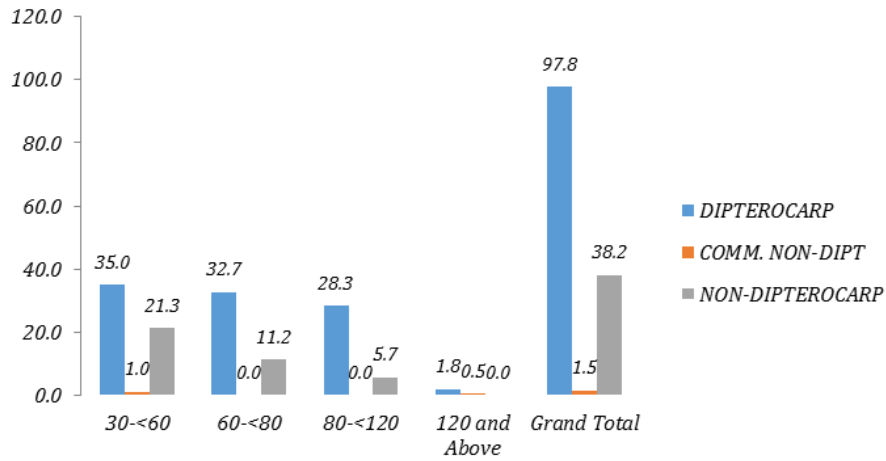
Compartment 10: Number of Tree ha-1 by DBH Class (cm)



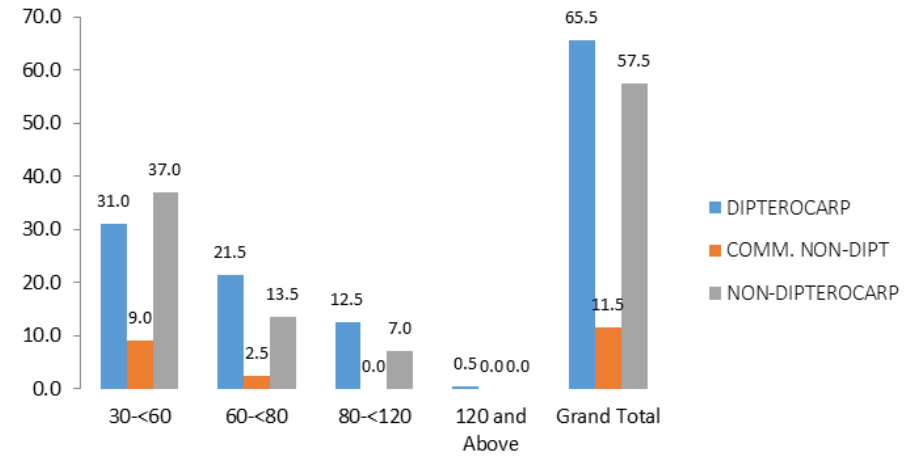
Compartment 34: Number of Tree ha-1 by DBH Class (cm)



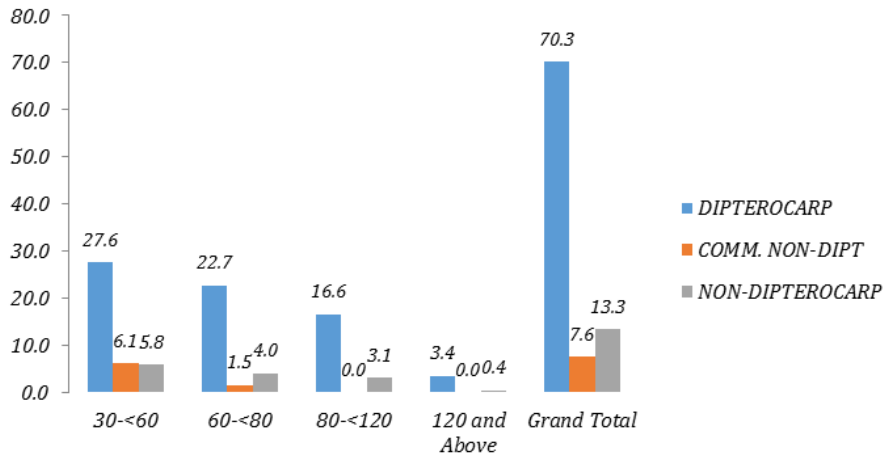
Compartment 34: Number of Tree ha-1 by DBH Class (cm)



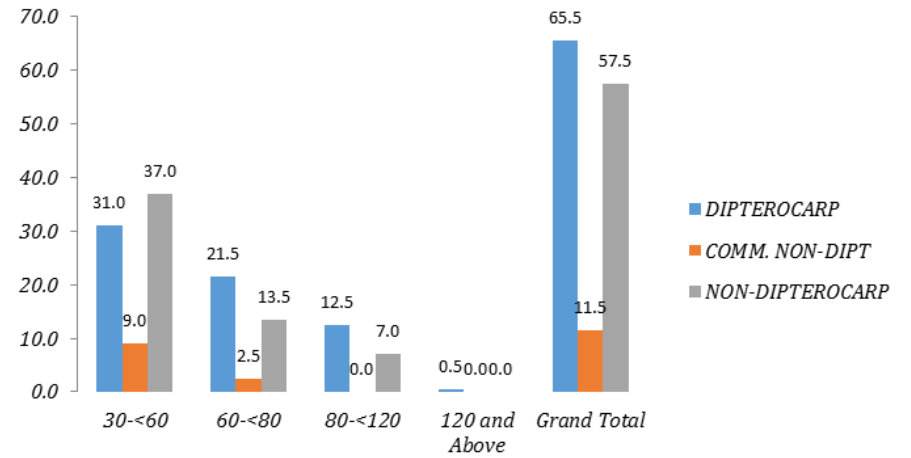
Compartment 52: Number of Tree ha<sup>-1</sup> by DBH Class (cm)



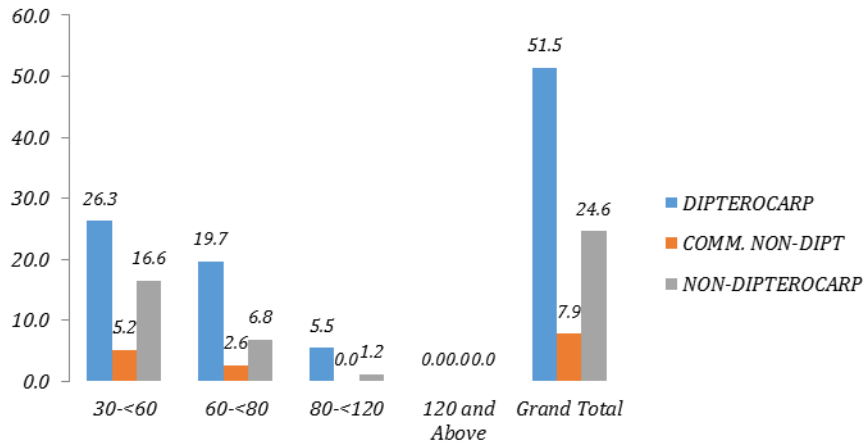
Compartment 55: Number of Tree ha<sup>-1</sup> by DBH Class (cm)



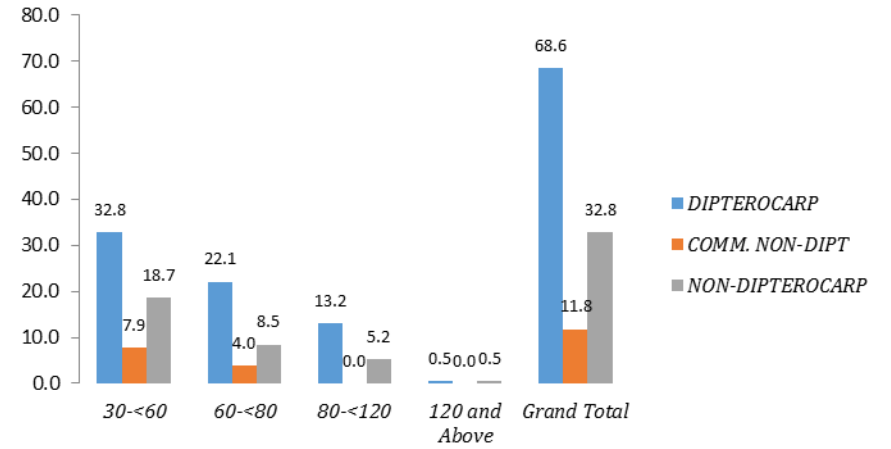
Compartment 55: Number of Tree ha<sup>-1</sup> by DBH Class (cm)



Compartment 55: Number of Tree ha<sup>-1</sup> by DBH Class (cm)

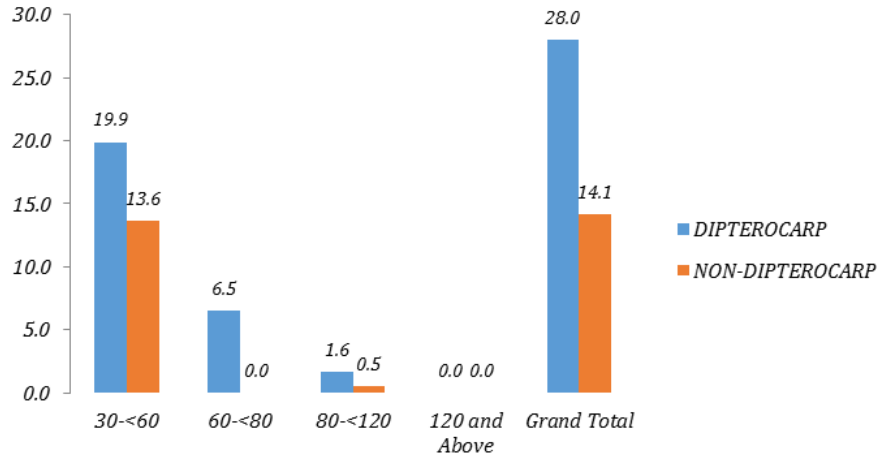


Compartment 74: Number of Tree ha-1 by DBH Class (cm)

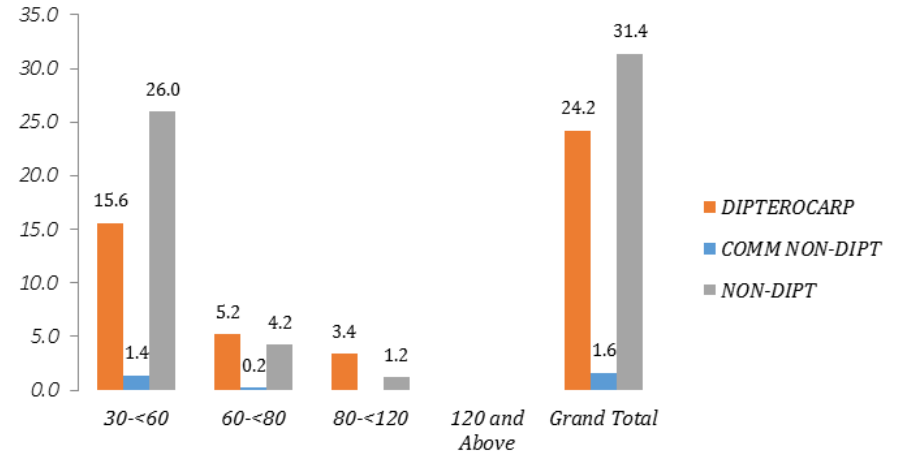


Compartment 74: Number of Tree ha-1 by DBH Class (cm)

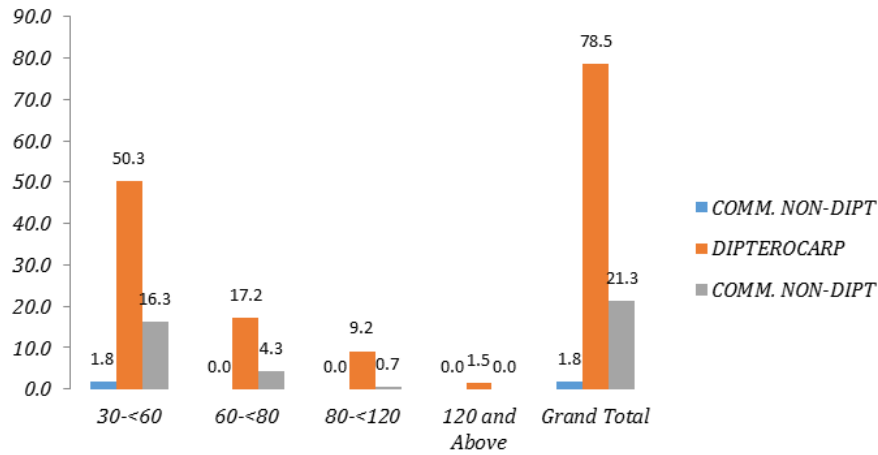
**2006 Data (Left) and Re-Enumeration in 2011 (Right)**



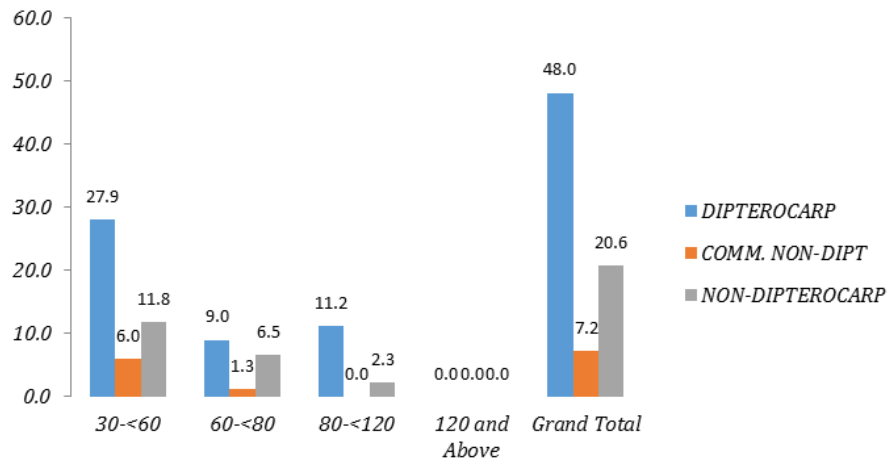
Compartment 17: Number of Tree ha-1 by DBH Class (cm)



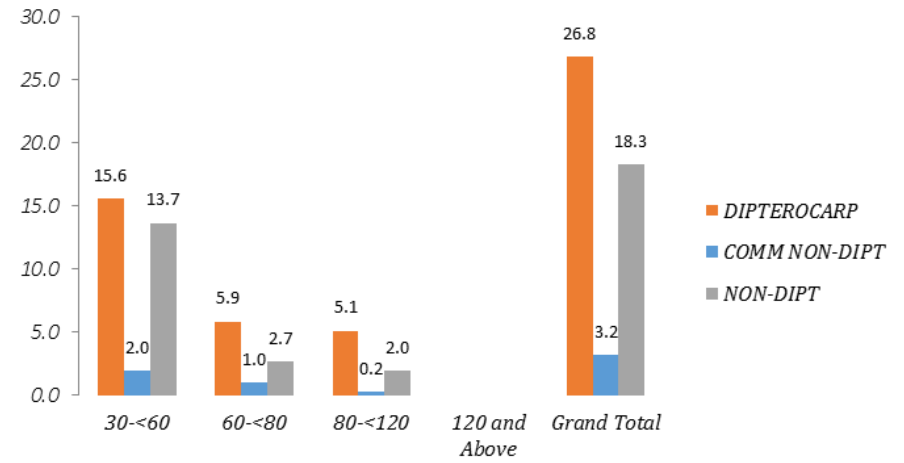
Compartment 17: Density of Tree (per ha.) by DBH Class (cm)



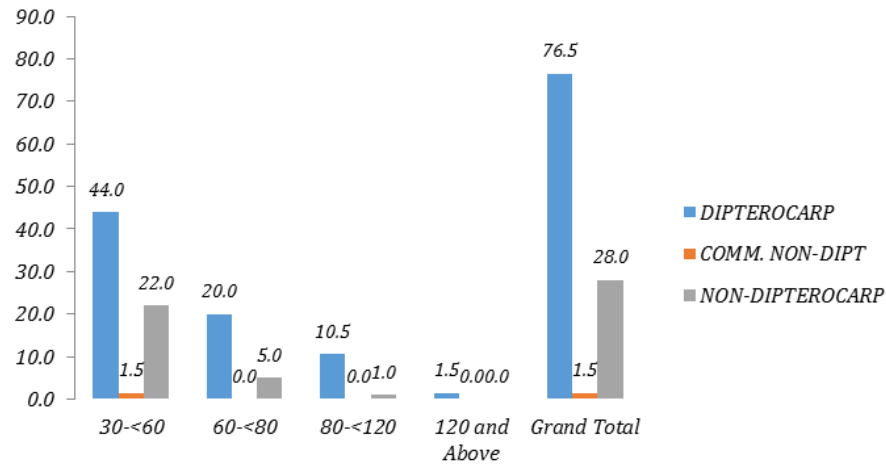
Compartment 57: Number of Tree ha-1 by DBH Class (cm)



Compartment 64: Number of Tree ha<sup>-1</sup> by DBH Class (cm)

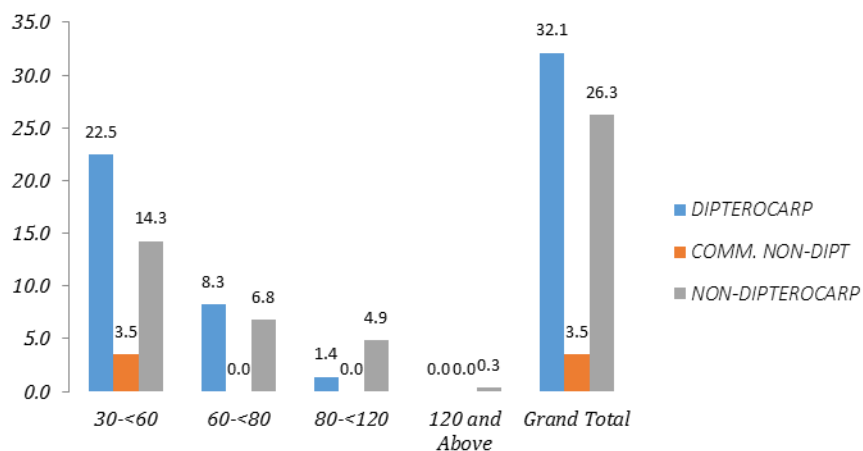


Compartment 64: Density of Tree (per ha.) by DBH Class (cm)

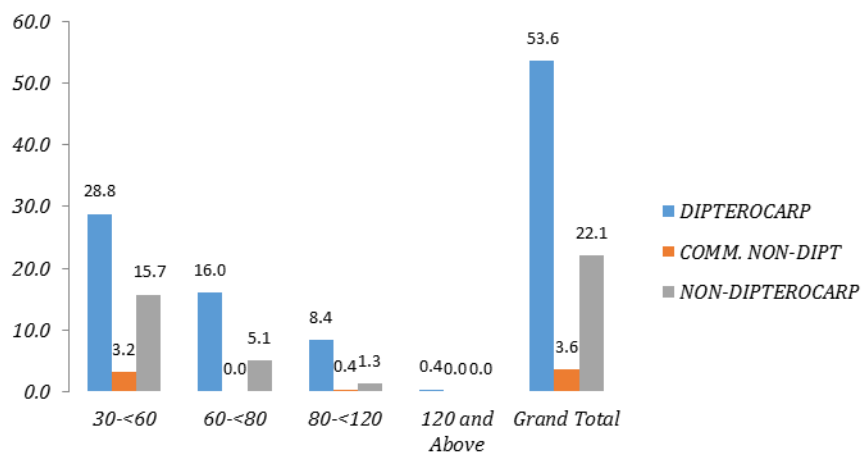


Compartment 85: Number of Tree ha<sup>-1</sup> by DBH Class (cm)

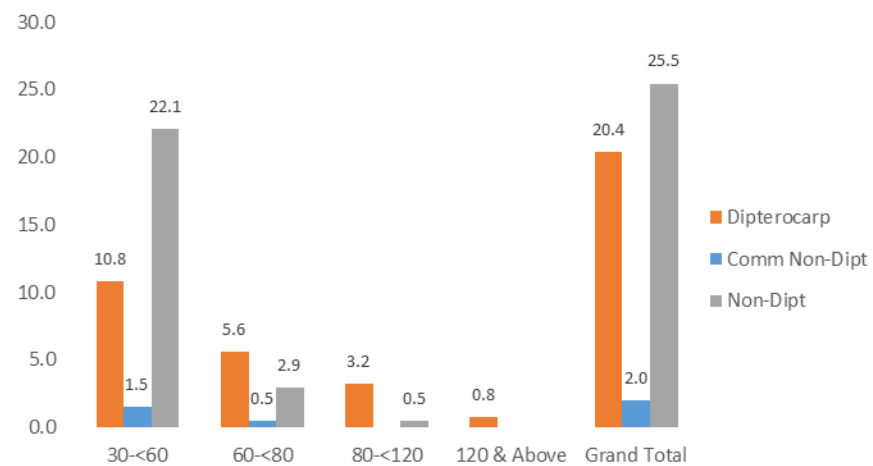
## 2007 Data (Left) and Re-Enumeration in 2012 (Right)



Compartment 1: Number of Tree ha<sup>-1</sup> by DBH Class (cm)

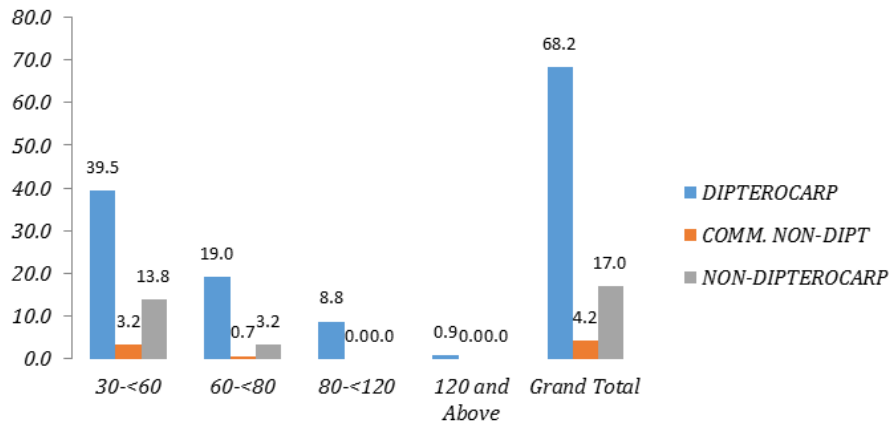


Compartment 14: Number of Tree ha<sup>-1</sup> by DBH Class (cm)

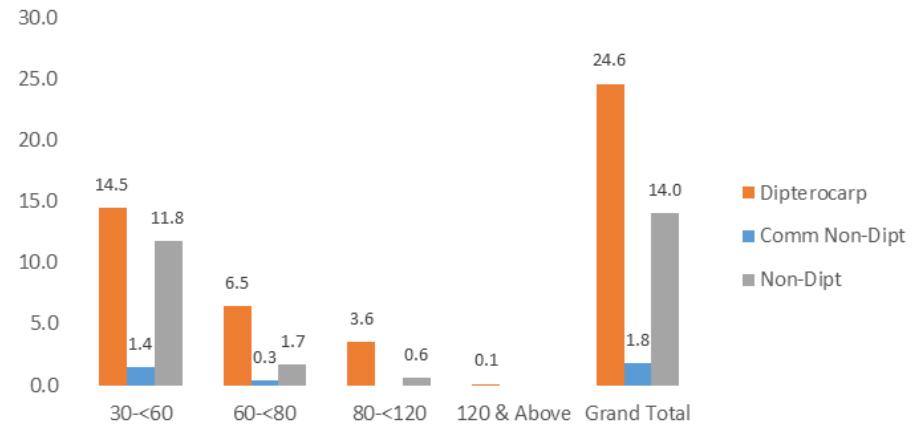


Compartment 14: Number of Tree ha<sup>-1</sup> by DBH Class (cm)

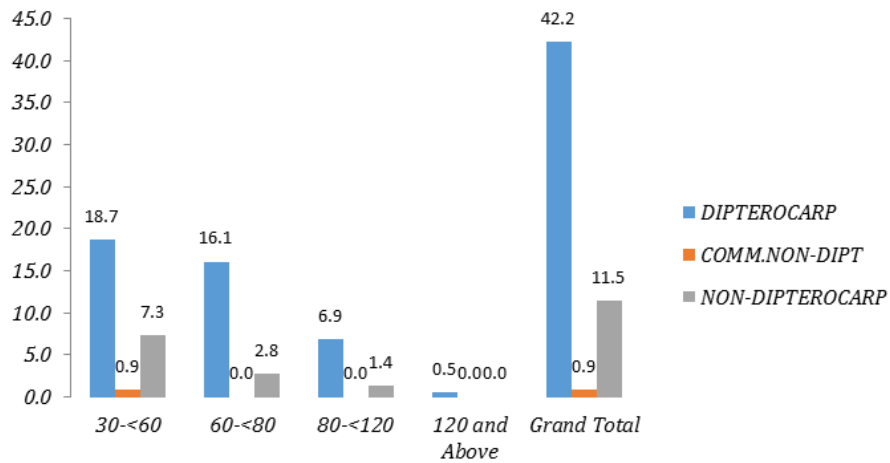




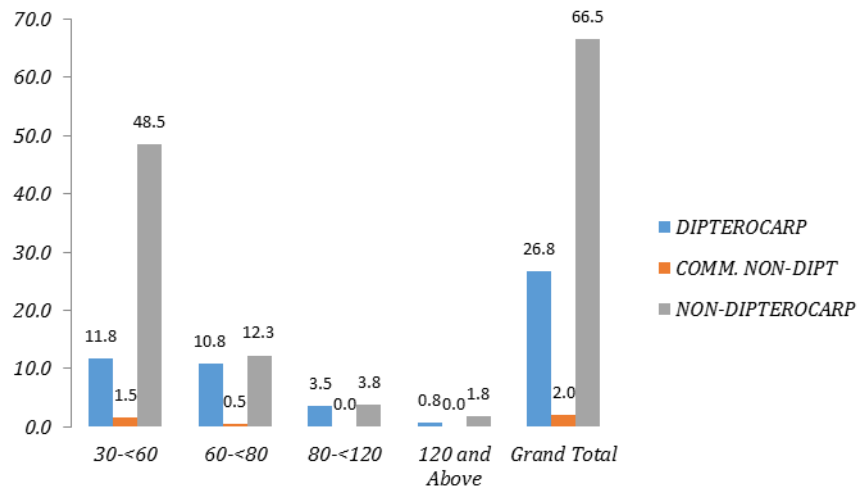
Compartment 33: Number of Tree ha-1 by DBH Class (cm)



Compartment 33: Number of Tree ha-1 by DBH Class (cm)

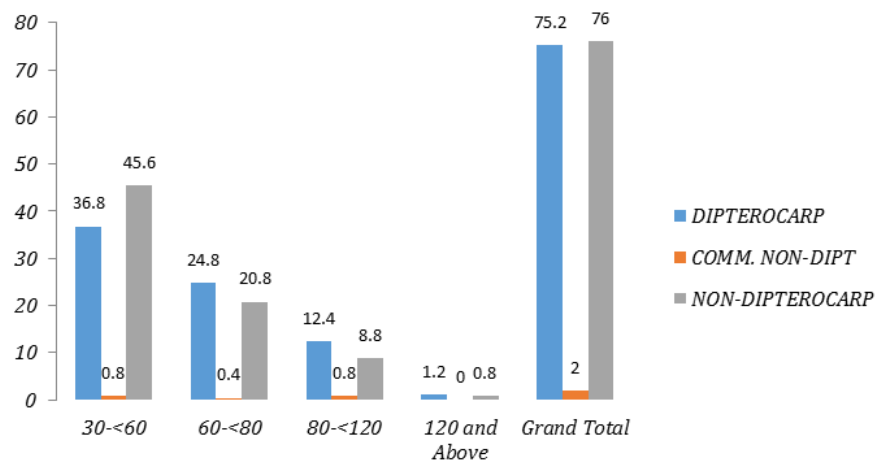


Compartment 56: Number of Tree ha-1 by DBH Class (cm)

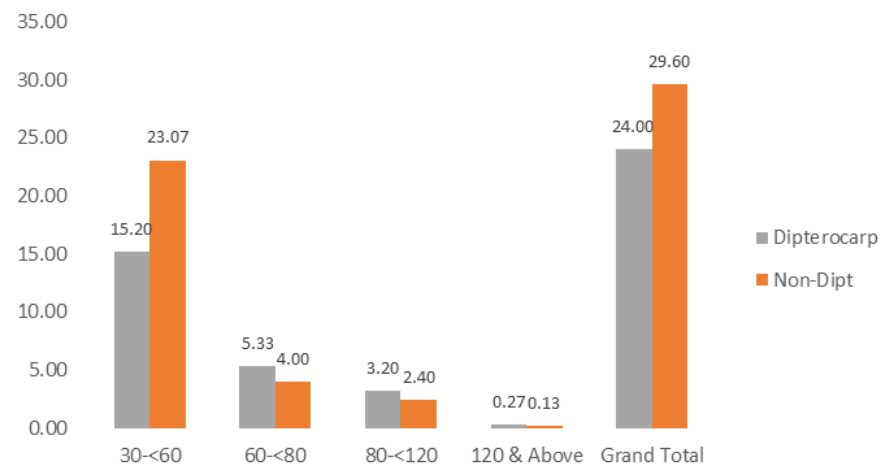


Compartment 86: Number of Tree ha-1 by DBH Class (cm)

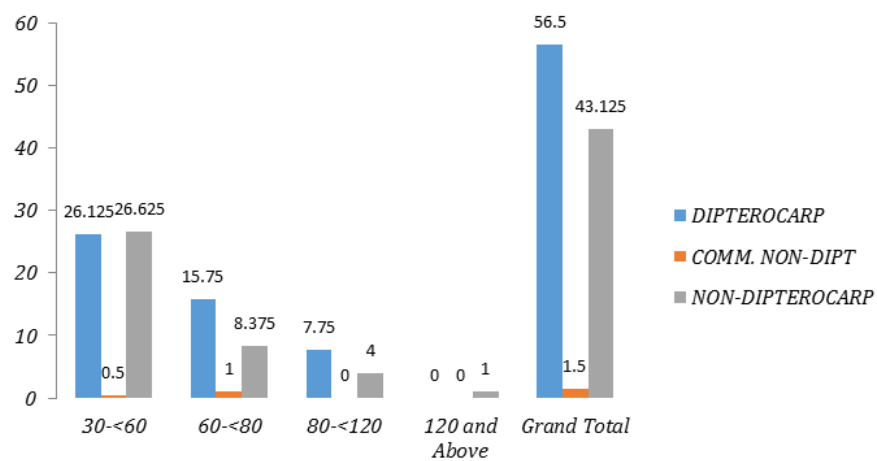
## 2008 Data (Left) and Re-Enumeration in 2013 (Right)



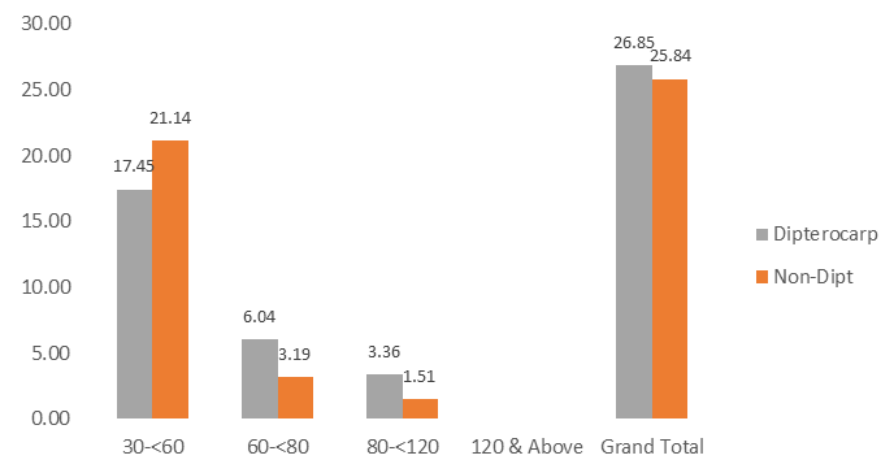
Compartment 1: Number of Tree ha-1 By DBH Class (cm)



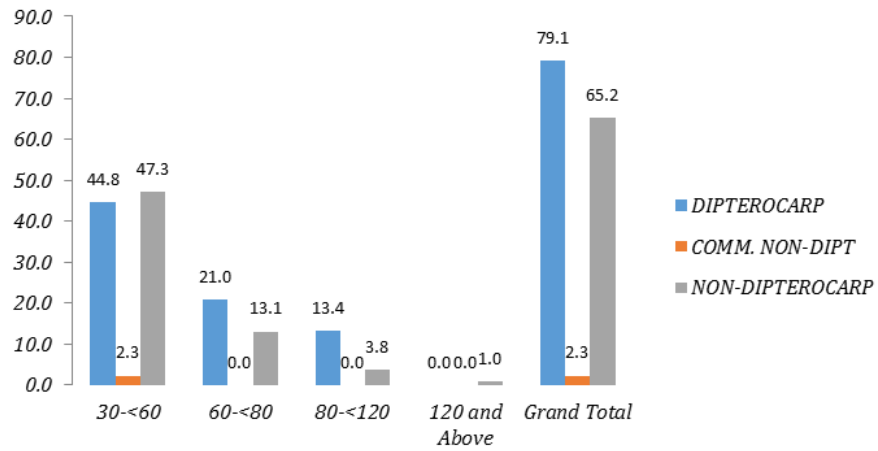
Compartment 1: Number of Tree ha-1 by DBH Class (cm)



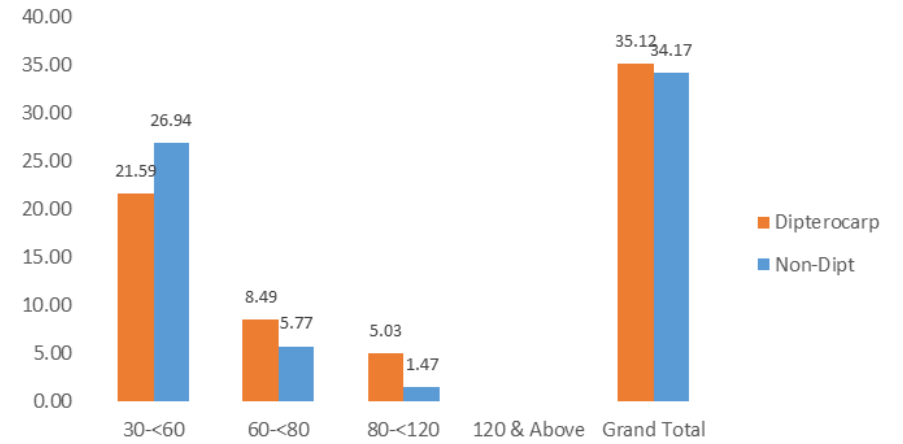
Compartment 9: Number of Tree ha-1 By DBH Class (cm)



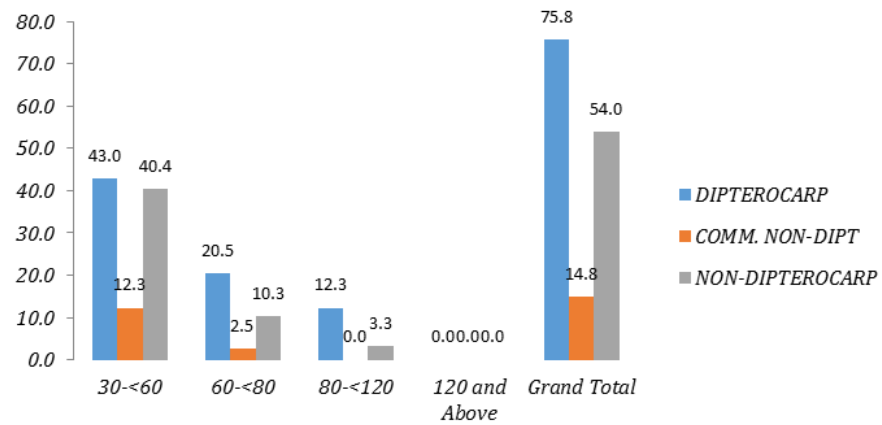
Compartment 9: Number of Tree ha-1 by DBH Class (cm)



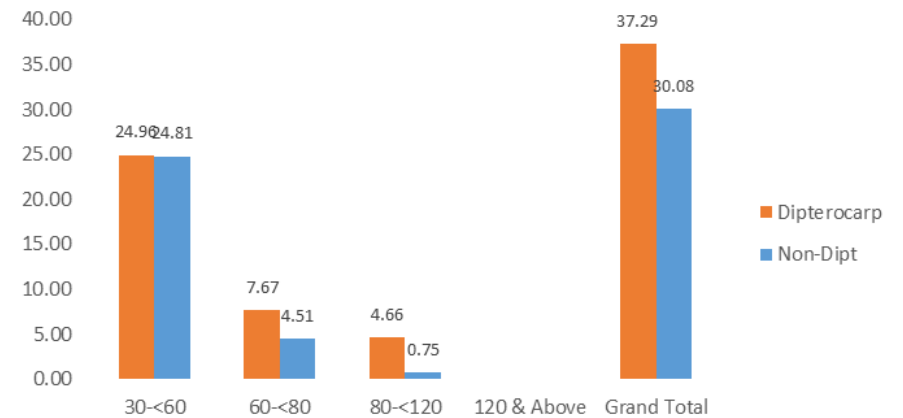
Compartment 62: Number of Tree ha-1 By DBH Class (cm)



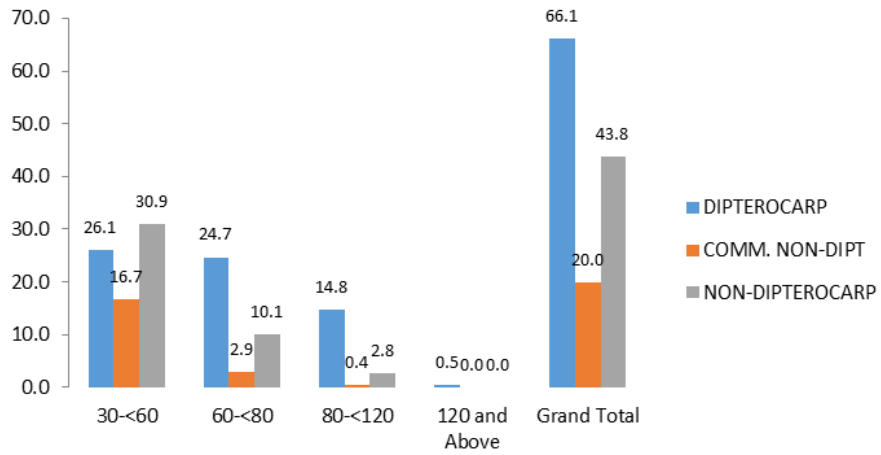
Compartment 62: Number of Tree ha-1 by DBH Class (cm)



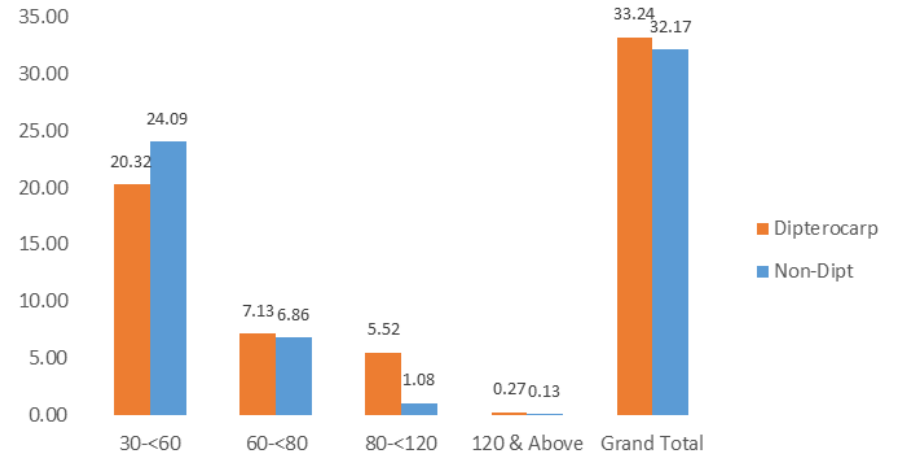
Compartment 105: Number of Tree ha-1 By DBH Class (cm)



Compartment 105: Number of Tree ha-1 by DBH Class (cm)

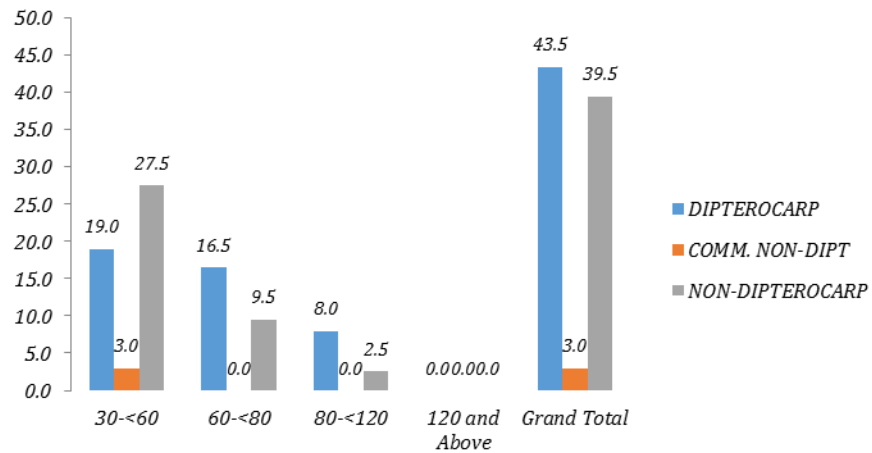


Compartment 114: Number of Tree ha-1 By DBH Class (cm)

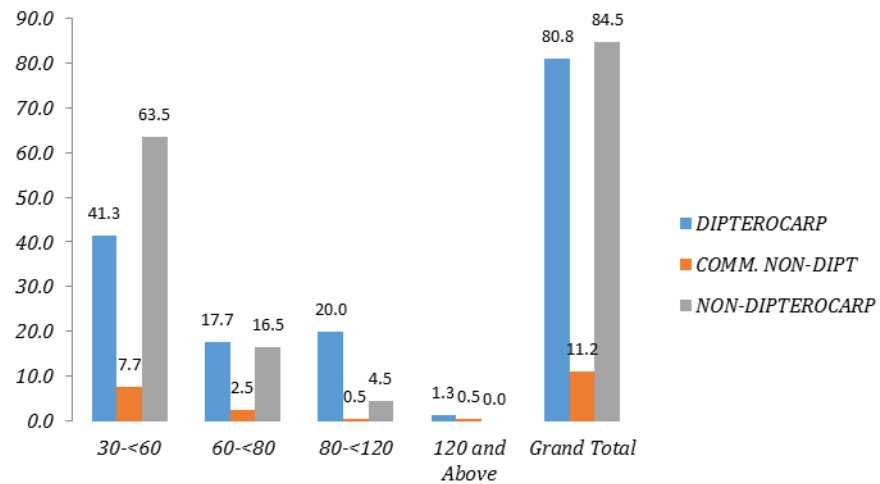


Compartment 114: Number of Tree ha-1 by DBH Class (cm)

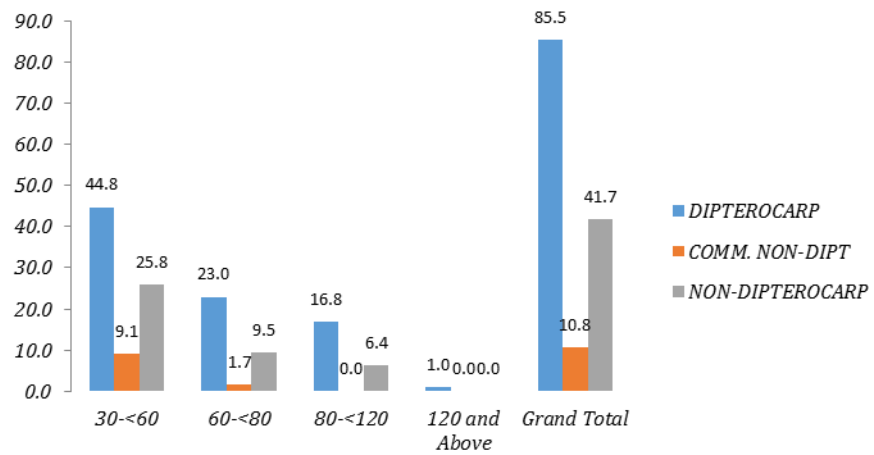
## 2009 Data



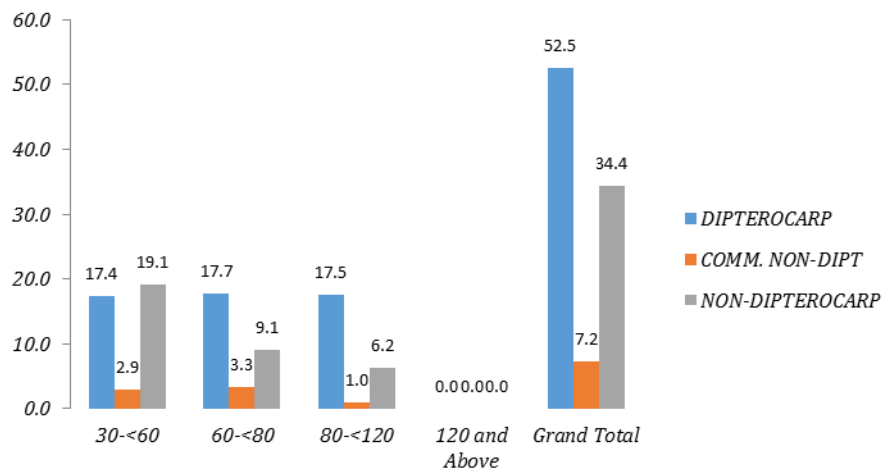
Compartment 42: Number of Tree ha-1 By DBH Class (cm)



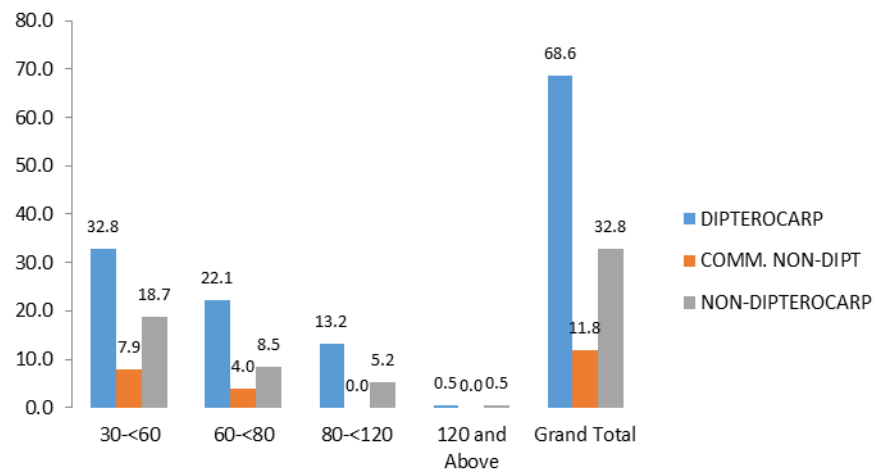
Compartment 48: Number of Tree ha-1 By DBH Class (cm)



Compartment 49: Number of Tree ha-1 By DBH Class (cm)



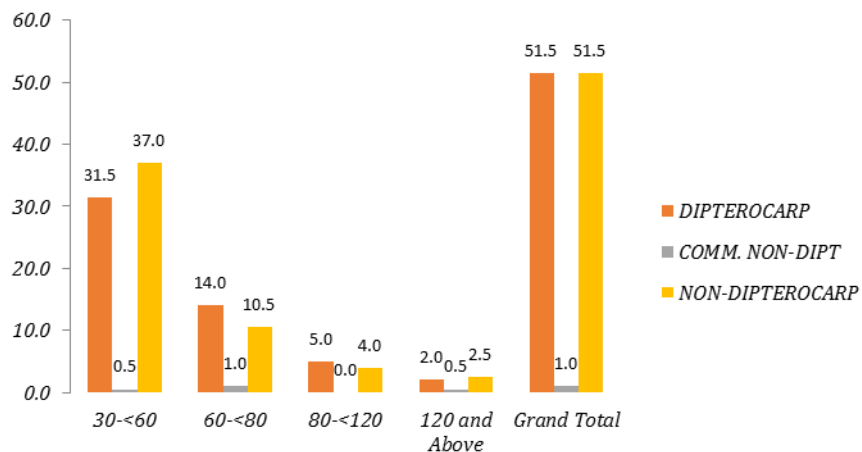
Compartment 64: Number of Tree ha-1 By DBH Class (cm)



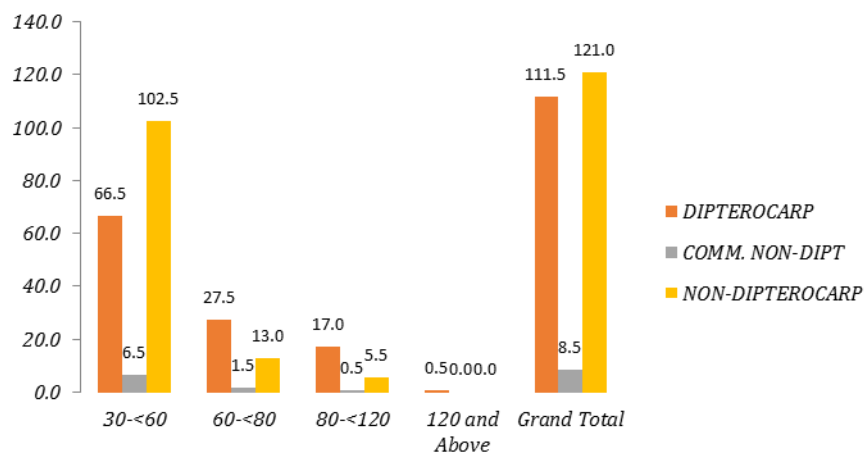
Compartment 74: Number of Tree ha-1 By DBH Class (cm)



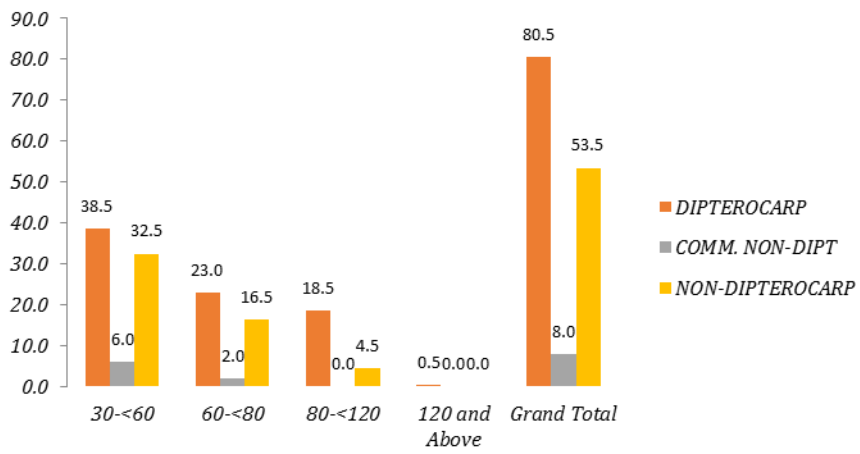
## 2010 Data



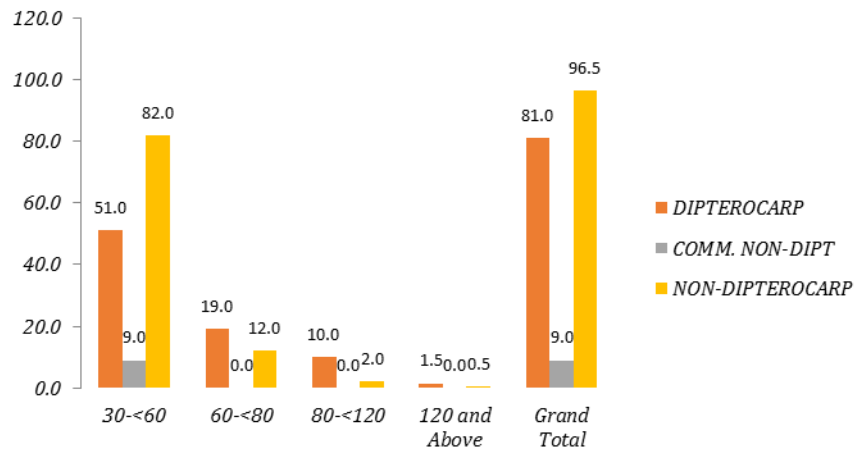
Compartment 16: Number of Tree ha<sup>-1</sup> by DBH Class (cm)



Compartment 50: Number of Tree ha<sup>-1</sup> by DBH Class (cm)

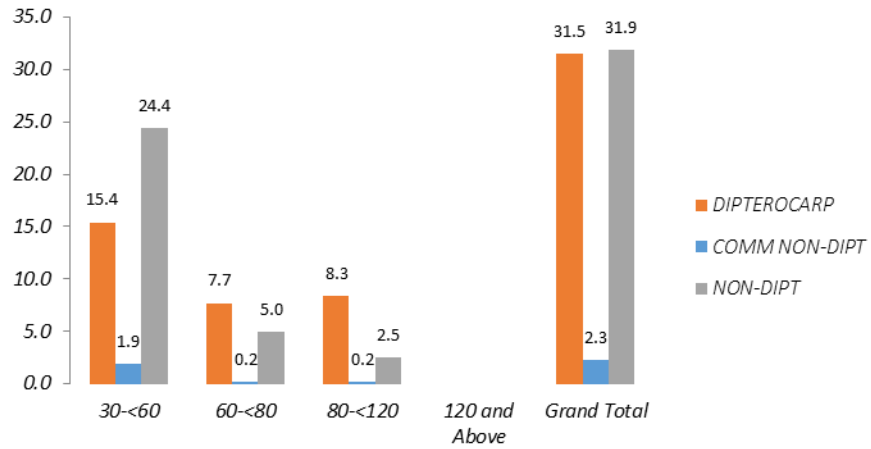


Compartment 63: Number of Tree ha<sup>-1</sup> by DBH Class (cm)

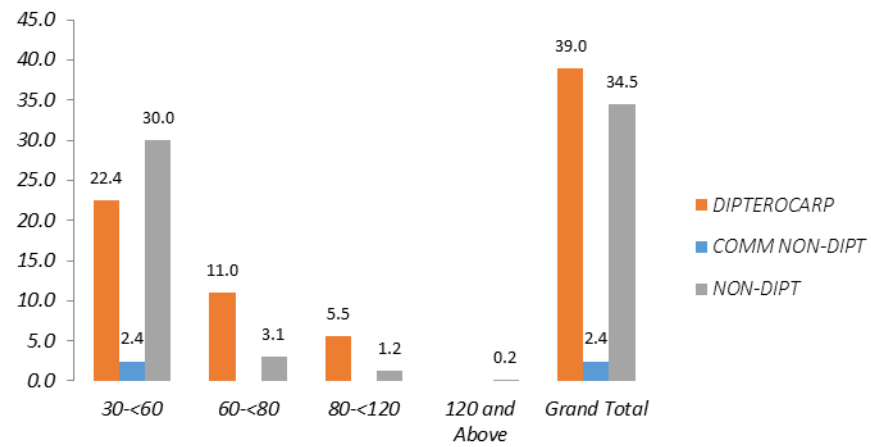


Compartment 76: Number of Tree ha<sup>-1</sup> by DBH Class (cm)

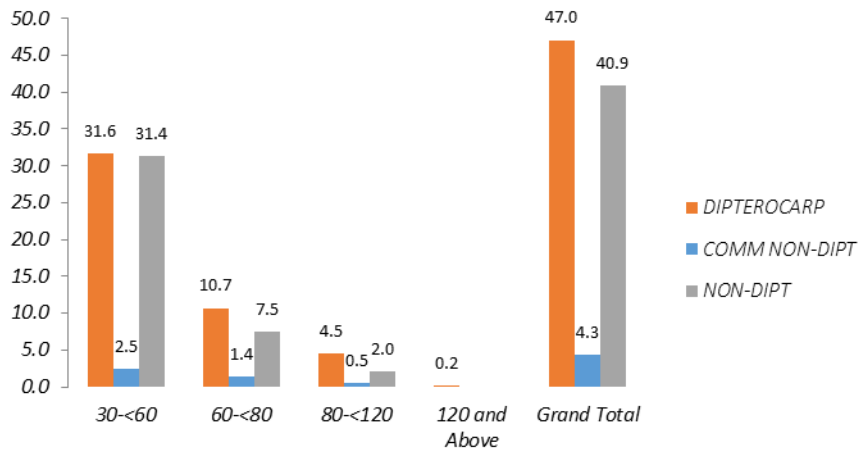
## 2011 Data



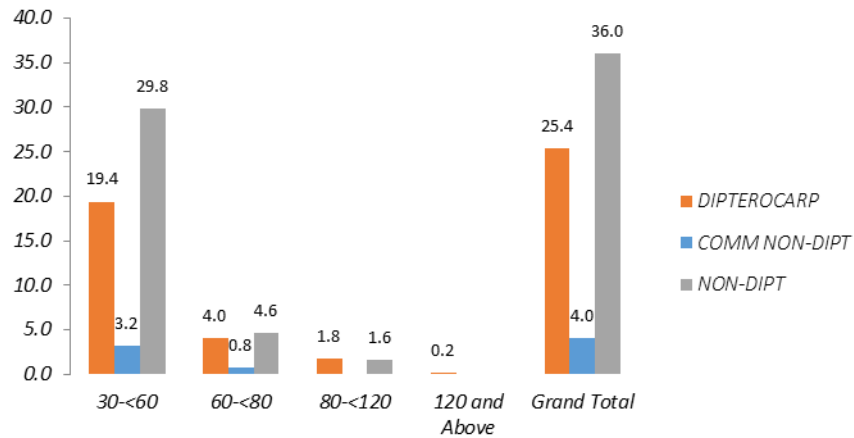
Compartment 43: Number of Tree ha-1 by DBH Class (cm)



Compartment 54: Density of Tree (per ha.) By DBH Class (cm)

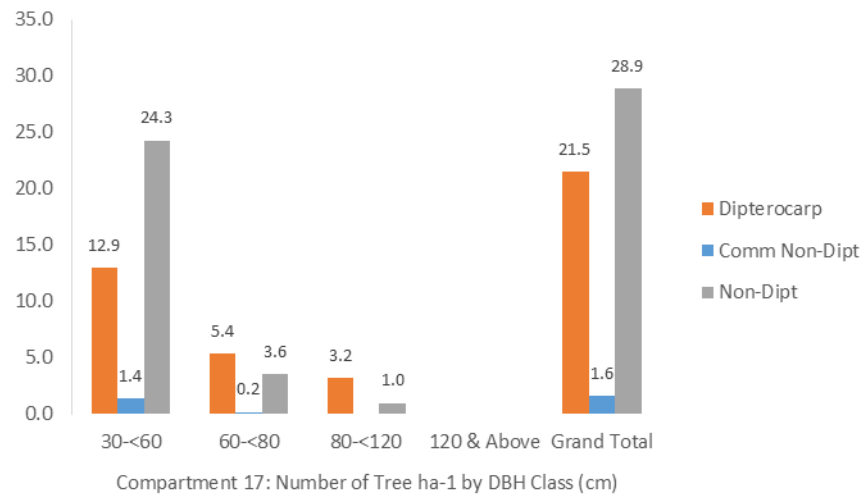
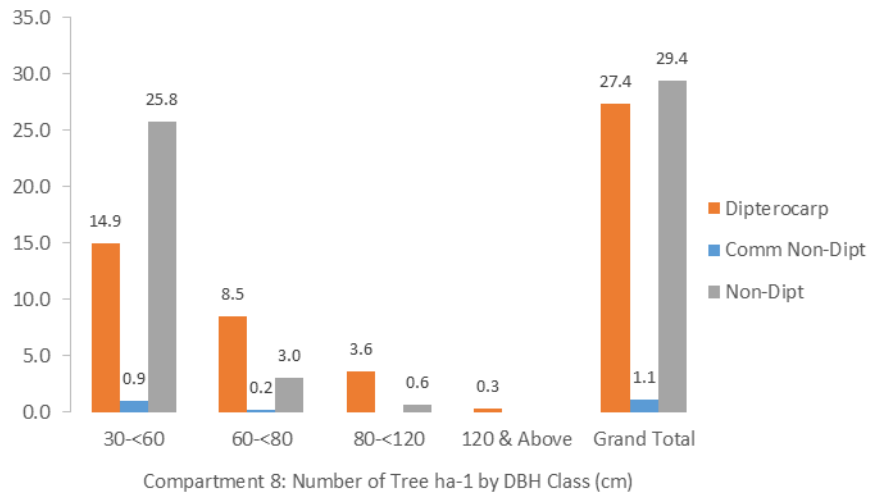


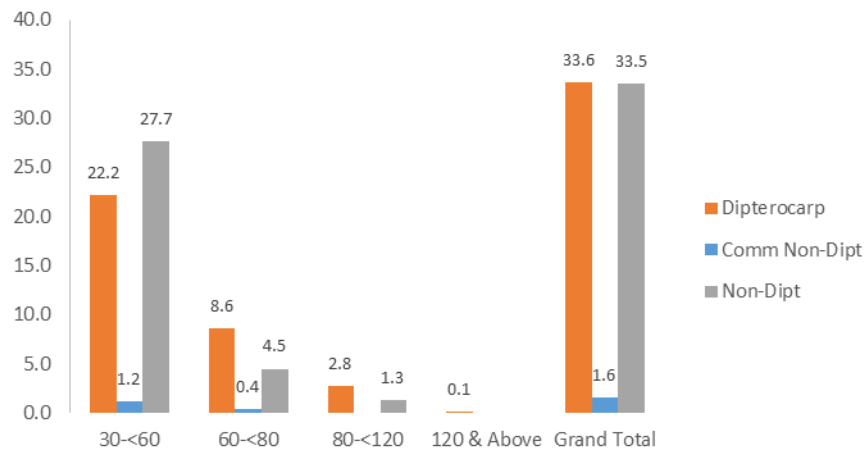
Compartment 61: Number of Tree ha-1 by DBH Class (cm)



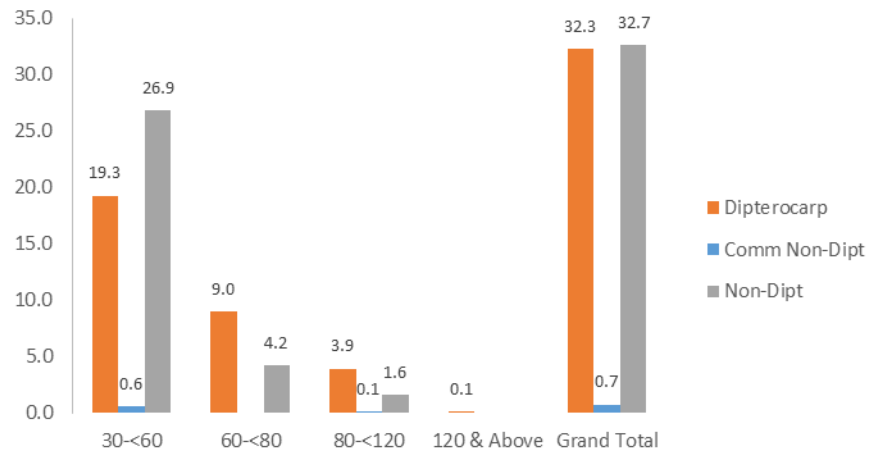
Compartment 97: Number of Tree ha-1 by DBH Class (cm)

## 2012 Data

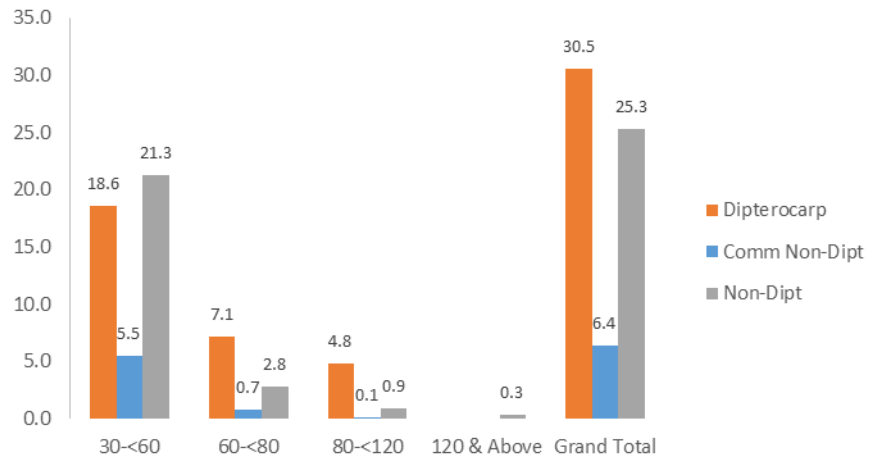




Compartment 51: Number of Tree ha<sup>-1</sup> by DBH Class (cm)

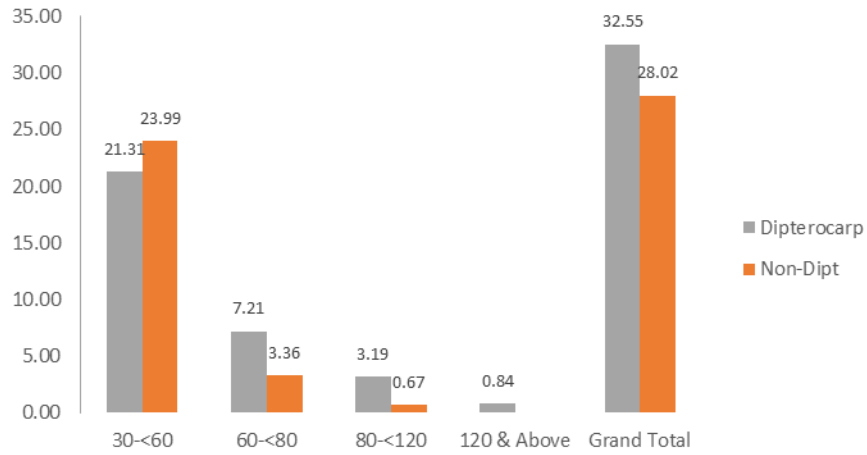


Compartment 53: Number of Tree ha<sup>-1</sup> by DBH Class (cm)

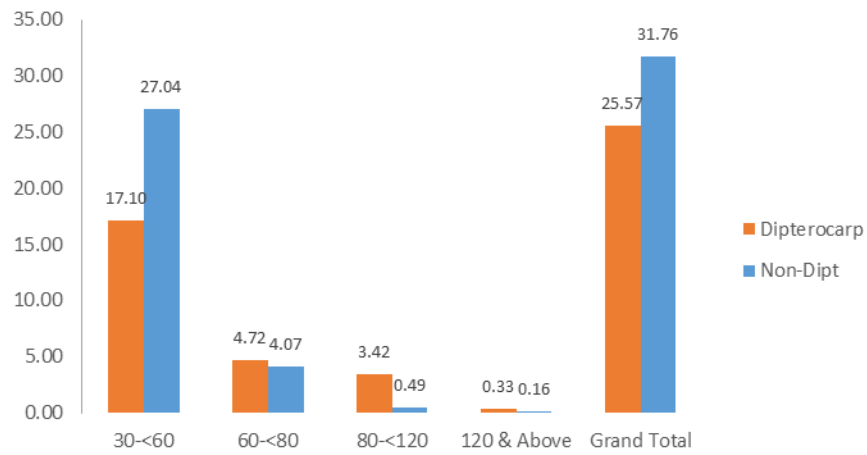


Compartment 77: Number of Tree ha-1 by DBH Class (cm)

## 2013 Data

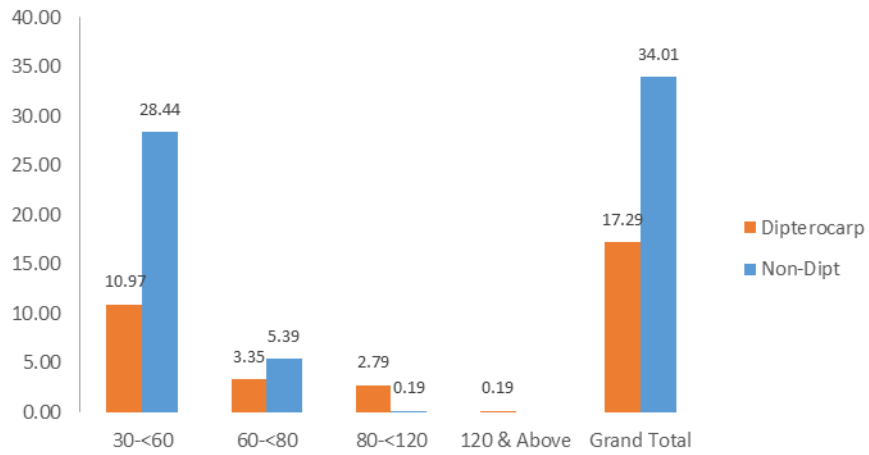


Compartment 31: Number of Tree ha<sup>-1</sup> by DBH Class (cm)

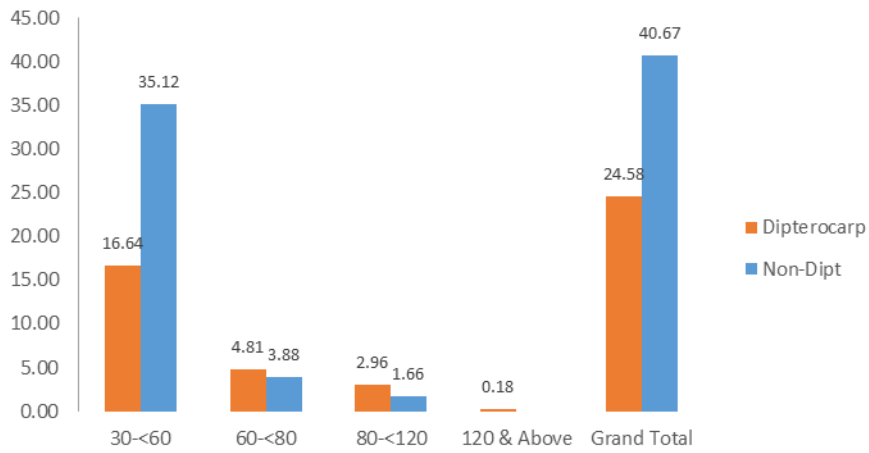


Compartment 71: Number of Tree ha<sup>-1</sup> by DBH Class (cm)



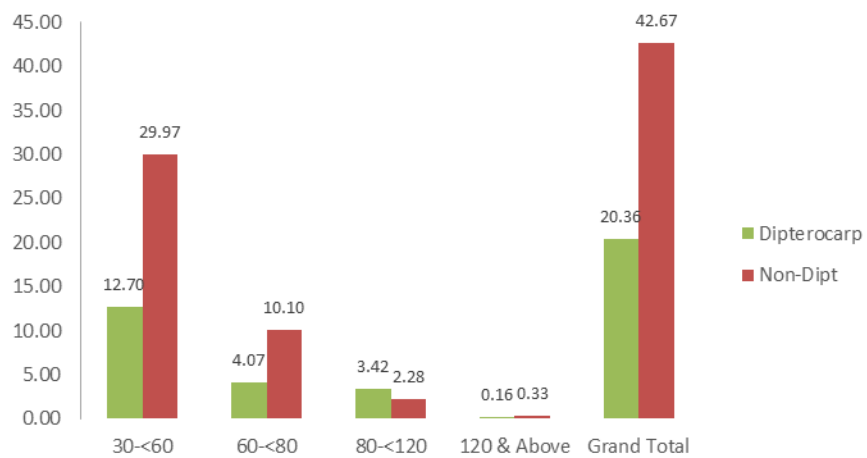


Compartment 72: Number of Tree ha-1 by DBH Class (cm)

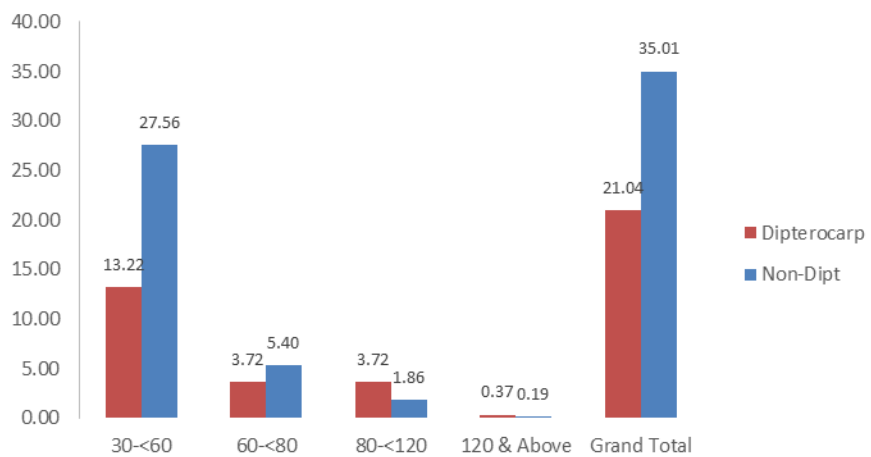


Compartment 104: Number of Tree ha-1 by DBH Class (cm)

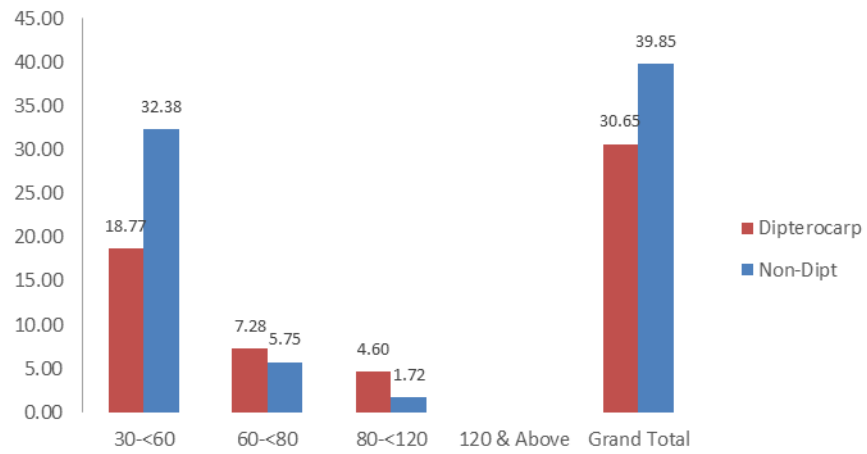
## **2014 Data**



Compartment 70: Number of Tree ha-1 by DBH Class (cm)



Compartment 106: Number of Tree ha-1 by DBH Class (cm)



Compartment 111: Number of Tree ha-1 by DBH Class (cm)